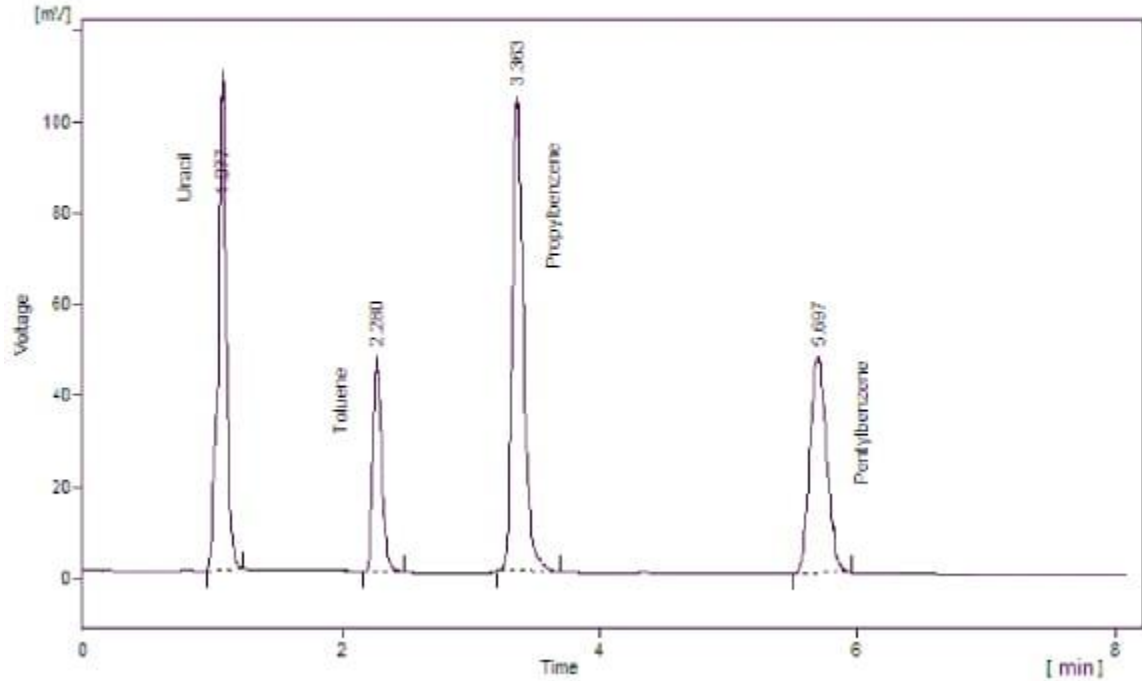


Zodiac C18 -i3 液相色谱柱分离尿嘧啶和烷基苯的应用

Column : Zodiac C18-i3
Dimension : 150 x 4.6mm,5 μ m
Mobile Phase : ACN/H₂O ; 85:15
Flow Rate : 1.3ml/min
Temperature : Ambient
Detection : UV @ 254 nm



化合物名称：尿嘧啶、甲苯、丙基苯、戊基苯

Column : Zodiac C8-i3
Dimension : 150 x 4.6mm,5 μ m
Mobile Phase : ACN/H₂O ; 85:15
Flow Rate : 1.3ml/min
Temperature : Ambient
Detection : UV @ 254 nm

